

Amuri Ward Reserves



Contents

Achray Esplanade Reserve	3
Balmoral Recreation Reserve	4
Culverden & Rutherford Railway Reserves	6
Culverden Esplanade Reserve	8
Flintoft Reserve	9
Fulton Park	10
Inland Esplanade Reserve	11
Mason Esplanade Reserve	12
Mockett Place Reserve	13
Morrisons Road Stock Resting Reserve	14
Mt Lyford Reserve	15
Mt View Gravel Reserve	16
Pahau Esplanade Reserve	17
Rotherham Reserve	18
Waiiau Esplanade Reserve	19
Waiiau Historical Reserve	20
Waiiau Memorial Hall and Library	22
Waiiau Reserve	24
Waiiau Village Green	26
Wandle Esplanade Reserve	27

Achray Esplanade Reserve

Description

Location	Waiau
Classification	Local Purpose Reserve - Esplanade
Area (hectares)	0.5977
Legal Description	Lot 21 DP 22113
Adjacent Land	Farm land
Facilities	None
Acquisition	Vested on deposit of plan. Classified by Council 16/05/07.

Introduction

Achray Esplanade Reserve is situated at the end of Achray Street, Waiau. The majority of the reserve is covered in willow trees and brush.

Specific Policies

- That adjoining owners be encouraged to manage the reserve in conjunction with their land holdings.

Future development potential

Achray Esplanade Reserve does not require any active development at this time.



Achray Esplanade Reserve location map



Achray Esplanade Reserve

Balmoral Recreation Reserve

Description

Location	Culverden
Classification	Recreation Reserve
Area (hectares)	17.35
Legal Description	Rural Section 40568, Block XIII Culverden Survey District, Survey Office 13791.
Adjacent Land	Farm land
Facilities	Toilet block, water taps, concrete fire places, picnic tables and long drop toilets.
Acquisition	Vested in Hurunui District Council 1994.

Introduction

The Balmoral Recreation Reserve is located north of the Hurunui River Bridge on State Highway 7 to Hanmer Springs, Culverden. Public access to the reserve is available from a gateway on Balmoral Station Road. The reserve was formerly owned by the New Zealand Forest Service and set aside as a picnic and camping area. The land was then allocated to the Department of Conservation in 1993 and vested in the Hurunui District Council in 1994. The day to day management of the Reserve is carried out by the Balmoral Recreation Area Charitable Trust (B.R.A.C.T).

The northern section of the reserve containing approximately 10 hectares and set amongst mature corsican pines (*Pinus nigra*), is used for camping. The remote camping ground features a toilet block, water taps, concrete fireplaces and picnic tables. Older long drop toilets remain within the camping area for use during peak times and during the winter months.

The southern portion of the reserve (approximately 7 hectares) is the location of the old cricket ground. This area was planted in pine trees approximately ten years ago, damaging the old concrete cricket pitch. Since this time the pine trees have been removed by a volunteer group who have ambitions to replace the damaged concrete cricket pitch with a grass pitch on a clay/lime base.

The northern portion of the reserve is district funded, whilst the southern portion is amenity funded.



Balmoral Recreation Reserve location map

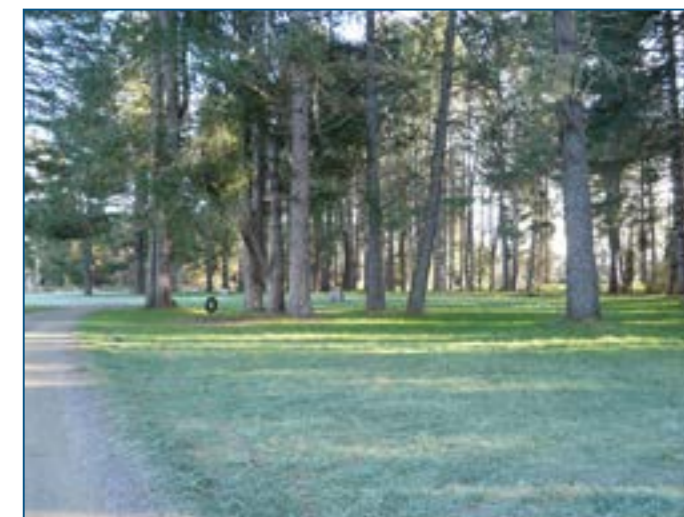
Specific Policies

- That a replacement shelter belt be established within the existing shelter belt prior to the required removal of aged trees.
- That an implement building and pump shed be constructed on the reserve.
- That the Balmoral Recreation Reserve be promoted as a remote camping site.
- That the camping area be clearly defined.
- That the Balmoral Recreation Reserve water supply be tested for potability on a regular basis.
- That additional picnic tables be erected within the reserve.
- That the Balmoral remote camping area be mown on a regular basis.
- That additional edible chestnut trees be planted alongside the existing tree.
- That the specimen trees be maintained and further plantings established, with the removal of pine trees if necessary.
- That the ablution block be closed to the public during the winter months due to the frequent freezing of the water pipes.

- That a register continue to be kept of the number and origin of overnight visitors to the reserve.
- That the damaged cricket pitch be replaced when funds allow.
- That the Balmoral Recreation Area Charitable Trust enter into a lease agreement with Council.
- That accessways to and through the reserve be enhanced as is feasible.
- That a pathway be considered for development through the trees at the southern end of the reserve through to the river, with due consideration given to the river.

Future development potential

The Balmoral Recreation Reserve is an important remote camping ground within Culverden which serves the needs of visitors from both within and outside of the district. The reserve shall continue to be developed with the planting of additional amenity trees and native species.



Balmoral Recreation Reserve



Balmoral Recreation Reserve



Balmoral Recreation Reserve - Southern Portion

Culverden & Rutherford Railway Reserves

Description

Location	Culverden
Classification	Recreation Reserve
Area (hectares)	13.7776
Legal Description	Section 76 Culverden Settlement Blocks VI-X Culverden Survey District
District Plan	T30, T91
Notations	
Adjacent Land	Farm land, Culverden Township, businesses
Facilities	<p>Culverden Recreation Reserve: Cricket shed, reserve building, two power boxes, a water supply, picnic tables, and a fitness trail.</p> <p>Rutherford Railway Reserve: playground, war memorial, trail, amenity planting, toilet block, carpark.</p>
Acquisition	Rutherford Railway Reserve purchased by Council 1988. Gazette 1989 p.2296



Culverden & Rutherford Railway Reserves location map

Introduction

The Culverden Recreation Reserve, formerly known as the Domain, is situated on Mountainview Road (SH7), Culverden. The day-to-day management of the reserve is carried out by the Culverden Community Committee who report to the Amuri Ward Committee.

The reserve can be divided into two distinct parts. The southern section contains the cricket club which includes the cricket grounds, shed and domain building; an informal camping area which has two power boxes, a caravan waste point and a water supply; and fitness trail around the circumference of the reserve. The eastern portion of the reserve fronting Culverden Road is currently used by the Pony Club. At the entrance stand distinctive memorial gates which are a tribute to the fallen in the Boer War.

The parcel of land forming the northern portion of the reserve is known as Rutherford Railway Reserve and is named in honour of the Rutherford family and their long association with the area. This section of the reserve was recently amalgamated to form part of the Culverden Recreation Reserve. From 1886 to the late 1970's this land formed part of the railway corridor and contained the Culverden railway yards, the railway station, goods-handling yard, workshop, refuelling facilities and

maintenance areas. The Rutherford Railway Reserve is dissected by a small stream and is predominantly grassed, flat and open, with clusters of established vegetation being scattered throughout. The reserve also contains a toilet block, children's playground, stone monument and a walkway linking it with the rest of the reserve to the south.

A sealed car park adjoins the Rutherford Railway Reserve to the south which is classified as Local Purpose but with all intents and purpose is managed in association with the Recreation Reserve.

Specific Policies

- That Culverden Recreation Reserve be promoted as a limited facility camping area.
- That the existing amenity trees on both the Culverden and Rutherford Recreation Reserves be maintained as appropriate.
- That the Culverden Recreation Reserve buildings be maintained.
- That the Pony Club enter into a lease agreement with Council.

- That freedom camping be permitted in Rutherford Railway Reserve, in accordance with the Freedom Camping Bylaw.

Future development potential

The Culverden Recreation Reserve is a pleasant open space that compliments the recent developments on the adjacent Rutherford Recreation Reserve. Any proposed developments must be in keeping with the rural aspect of the reserves.



Culverden Recreation Reserve



Playground - Rutherford Railway Reserve

Culverden Esplanade Reserve

Description

Location	Culverden
Classification	Local Purpose Reserve - Esplanade
Area (hectares)	0.0895
Legal Description	Lot 4 DP 311510
Adjacent Land	Pahau River and rural land
Facilities	None
Acquisition	Hurunui District Council 2003. Classified by Council 24/11/05.

Introduction

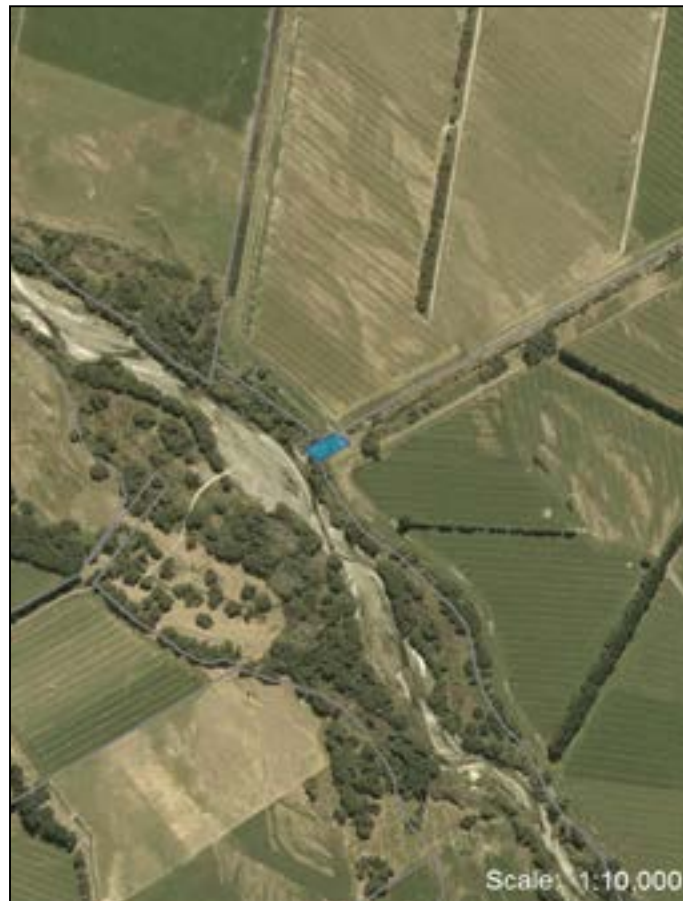
The Culverden Esplanade Reserve is situated along side the Pahau River. The reserve was formed in 2003 on the subdivision of surplus railway land linking the Pahau River with the Culverden township. The reserve is land locked as inaccessible to pedestrians.

Specific Policies

- That the adjoining owners be encouraged to manage the reserve in conjunction with their holdings.

Future development potential

The Culverden Esplanade Reserve is not accessible to the public and is difficult to maintain. It is not considered appropriate for active development at this time.



Culverden Esplanade Reserve location map



Culverden Esplanade Recreation Reserve

Flintoft Reserve

Description

Location	Rotherham
Classification	Historic Reserve
Area (hectares)	0.2596
Legal Description	Lot 1 DP 77109
District Plan	H42
Notations	
Adjacent Land	Rotherham township
Facilities	Watters Cob Cottage and interpretation panel on South Street
Acquisition	Gifted land 1998. Gazette ref 2000 No.13 p.325

Introduction

Flintoft Reserve also known as Watters Cottage, is situated in Rotherham Township on the south east corner of the junction of George Street (SH 70) and South Street. The reserve contains one of the few remaining original cob cottages in the locality. It is a physical reminder of the contribution that workmen and their families made to the development of Amuri County.

The cottage was built by an Irish farm labourer Mr John Watters between the late 1870s and the early 1880s. He and his wife Jane raised their family of three sons and four daughters in the cottage. The oldest child John never married and lived in the cottage until his death in 1959.

The cottage and its immediate surrounds were gifted by the Flintoft family to the Council and has been classified as a Category II building, being "a place of historical or cultural significance" under the Historic Places Act 1993. A conservation plan for the cottage was completed in 1995 and should provide the basis for further conservation work.

Specific Policies

- That the Flintoft Reserve grounds be maintained on a regular basis.
- That the existing pedestrian path around the cob cottage be sprayed regularly to keep it free from weeds.
- That the existing amenity garden be improved as funds allow.
- That the cob cottage continue to be maintained and restored as is appropriate.
- That the cob cottage be opened to the public on occasion.
- That the cob cottage be reviewed by the Amuri Historic Society on a regular basis.



Flintoft Reserve location map

Future development potential

Flintoft Reserve currently features an interpretation panel on South Street with a pedestrian access through a small picket gate. There are existing gardens beside the cottage which could be enhanced with further plantings.



Flintoft Reserve

Fulton Park

Description

Location	Waiau
Classification	Recreation Reserve
Area (hectares)	17.9174
Legal Description	Lot 1 DP 4984, Block XIII, Waiau Survey District & Lot 1 DP 10112, Part Section 65, Block XII, Waiau Survey District
Adjacent Land	Farm land
Facilities	None
Acquisition	Gazette 1950/724, Gazette 65/2157

Introduction

Fulton Park is situated west of Waiau on the corner of SH70 and Iverachs Road. The land is managed by the Waiau Reserve Committee. Part of the reserve is grazed and part is planted in forestry.

Specific Policies

- That Fulton Park be subject to a lease agreement.
- That Fulton Park be suitable for continued forestry planting if desired.

Future development potential

Fulton Park is flat land that is suitable for development as a recreation reserve should the land be required in the future.



Fulton Park location map



Fulton Park

Inland Esplanade Reserve

Description

Location	Waiau
Classification	Local Purpose Reserve - Esplanade
Area (hectares)	0.0719
Legal Description	Lot 3 DP 71382 Block II Waiau Survey District
Adjacent Land	Wandle River and farm land
Facilities	None
Acquisition	Hurunui District Council 1996. Classified by Council 16/05/07



Inland Esplanade Reserve location map

Introduction

The Inland Esplanade Reserve was formed in 1996 on subdivision. This landlocked reserve is adjacent to the Wandle River and is grazed for maintenance purposes.

Specific Policies

- That adjoining owners be encouraged to manage the reserve in conjunction with their land holdings.

Future development potential

The Inland Esplanade Reserve could be further enhanced with the planting of amenity trees.



Inland Esplanade Reserve

Mason Esplanade Reserve

Description

Location	Waiau
Classification	Local Purpose Reserve - Esplanade
Area (hectares)	0.128
Legal Description	Lot 2 DP 53702, Reserve Block XIII, Waiau Survey District
Adjacent Land	Mason River
Facilities	None
Acquisition	Vested on deposit of plan. Classified by Council 16/05/07



Mason Esplanade Reserve location map

Introduction

The Mason Esplanade Reserve is a small area of land situated at the end of the Amuri Engineering Yard. The land is leased by the Engineering Yard on a five yearly basis. The reserve's primary purpose is for flood protection.

Specific Policies

- That the Amuri Engineering Yard continue to occupy the Mason Esplanade Reserve in accordance with their lease agreement.
- That the Mason Esplanade Reserve shingle pit not be accessible to the public.

Future development potential

The Mason Esplanade Reserve is well suited to its current use as an extension to the storage area of the Amuri Engineering Yard.



Mason Esplanade Reserve

Mockett Place Reserve

Description

Location	Culverden
Classification	Recreation Reserve
Area (hectares)	0.1904
Legal Description	Lot 8 DP 37582, Block VI, Culverden Survey District
Adjacent Land	Mockett Place residential housing
Facilities	Swings, rubbish bin, seating, monkey bars, merry-go-round, slide, sealed skateboard/biking track
Acquisition	Vested on deposit of plan. Classified by Council 16/05/07

Introduction

The Mockett Place Reserve has a well developed play ground serving the needs of both young and older children. The playground features play equipment such as swings and a merry-go-round whilst around the edge of the reserve is a concrete biking/skateboard track. The perimeter track is separated from the formal play area by small fence. The reserve also contains some amenity gardens.

Specific Policies

- That the Mockett Place Reserve be planted in amenity trees for shade purposes.
- That the Mockett Place Reserve play ground be maintained as appropriate.
- That additional play equipment be installed within the reserve.



Mockett Place Reserve location map

Future development potential

The Mockett Place Reserve is a well designed and utilised residential reserve. The planting of shade trees in the front portion of the reserve would enhance the use of the reserve in the summer months.



Mockett Place Reserve

Morrison's Road Stock Resting Reserve

Description

Location	Culverden
Classification	Local Purpose Reserve - Utility
Area (hectares)	3.8142
Legal Description	Reserve 4312, Block XIV, Mandamus Survey District
Adjacent Land	Balmoral Recreation Reserve
Facilities	None
Acquisition	Gazette 1949 pg. 1370. Classified NZ Gazette 03/7/08, p.2877

Introduction

The Morrison's Stock Resting Reserve was taken in 1949 for the purposes of resting stock. The reserve is situated adjacent to the Balmoral Recreation Reserve and is bisected by the McGraths Creek. Formerly leased by the Isaac Construction Company for the storage of shingle, the reserve is now planted in pines.

Specific Policies

- That the Morrison's Stock Resting Reserve continue to be used by Council contractors as required.
- That the trees be maintained as appropriate.

Future development potential

The Morrison's Road Stock Resting Reserve could be developed as an extension to the Balmoral Recreation Reserve if desired.



Morrison's Road Stock Resting Reserve location map



Morrison's Road Stock Resting Reserve

Mt Lyford Reserve

Description

Location	Mt Lyford
Classification	Recreation Reserve
Area (hectares)	1.8835
Legal Description	Lot 98 DP 53395, Block XV, Terako Survey District
Adjacent Land	Mt Lyford Ski Field
Facilities	Two public toilets, a viewing platform, children's slide, picnic table and walkway
Acquisition	Vested on deposit of plan. Classified by Council 16/05/07

Introduction

Mount Lyford Recreation Reserve was vested in the Hurunui District Council on subdivision in 1988. The reserve is situated in close proximity to the entrance to the Mt. Lyford Ski Field and features two public toilets, a viewing platform and children's slide. The balance of the reserve consists of native grasses and some bush land. Landscaping and picnic tables have been added to enhance this reserve. The day-to-day management of the reserve is carried out by the Mt Lyford Resident's Association who report to the Amuri Ward Committee.

Specific Policies

- That the public toilets be consistently maintained.
- That the public toilets be monitored for any vandalism and steps taken to prevent such activity.
- That the children's slide landing area be compliant with safety standards.
- That a replacement information board be erected providing information about the Mt Lyford area.
- That a coin-fed bbq be constructed as funds allow.

Future development potential

The Mount Lyford Recreation Reserve could be further enhanced with the construction of a shelter which overtime as funds allow could be enclosed and turned into a community centre.

There is also the potential to acquire the adjacent parcel of land with the pond to extend the reserve to the northwest.



Mt Lyford Reserve location map



Mt Lyford Reserve

Mt View Gravel Reserve

Description

Governance	Hurunui District Council
Management	Hurunui District Council
Location	Culverden
Classification	Local Purpose Reserve - Public Utility
Area (hectares)	1.0117
Legal Description	Reserve 4967, Blocks VI-X, Culverden Survey District
Adjacent Land	Culverden township
Facilities	Pump shed
Acquisition	Vested NZ Gazette 1958, p.1241. Classified NZ Gazette 14/6/07 p.1699



Mt View Gravel Reserve location map

Introduction

The Mt View Gravel Reserve is situated on Culverden Road (SH7), Culverden. Formerly used for gravel purposes, the reserve is fenced from adjoining properties and is screened from the road by a row of mature poplars. The middle of the reserve fills with water for the majority of the year with only the perimeter of the reserve being grazed for maintenance purposes.

Specific Policies

- That additional trees be planted within the reserve.
- That adjoining owners be encouraged to manage the reserve in conjunction with their land holdings.

Future development potential

The Mt View Gravel Reserve is suitable for further planting in trees if desired.



Mt View Gravel Reserve

Pahau Esplanade Reserve

Description

Location	Culverden
Classification	Local Purpose Reserve - Esplanade
Area (hectares)	1.3
Legal Description	Lot 2 DP 64023, Block VIII, Mandamus Survey District
Adjacent Land	Pahau River
Facilities	None
Acquisition	Gazette 1993. Classified by Council 16/05/07

Introduction

The Pahau Esplanade Reserve is situated along side the Pahau River and may be accessed from Cascade Road, Culverden. It should also be noted that the Islington Kikiwa A 220 kV AC single circuit line on towers traverses a corner of this reserve.

The esplanade reserve was formed on subdivision of the Pickering family property in 1993, is planted in mature willow trees and serves as a popular swimming hole for local residents.

Specific Policies

- That the adjoining owners be encouraged to manage the reserve in conjunction with their land holdings.
- That any proposed development of the reserve duly considers Transpower's requirements for maintenance and upgrades.

Future development potential

The Pahau Esplanade Reserve does not require any active development at this time.



Pahau Esplanade Reserve location map



Pahau Esplanade Reserve

Rotherham Reserve

Description

Location	Rotherham
Classification	Recreation Reserve
Area (hectares)	4.0823
Legal Description	Lot 1 DP 7364, Block IV, Culverden Survey District
District Plan	T110
Notations	
Adjacent Land	Rotherham Hall
Facilities	A & P secretary's office, irrigat- ed show ring, amenity trees, established shelter hedging
Acquisition	Gazette 1997 pg.3668

Introduction

Rotherham Reserve, formerly known as Rotherham Domain, is situated beside the Rotherham Hall on East Street, Rotherham. The reserve is the site of the A&P show grounds and features stands of oak trees and a show ring, with portions of the reserve grazed for maintenance purposes.

The railing around the ring is gradually replaced each year. A new total span building/shed, funded by the A&P Society is to replace the old secretary's office which is to be demolished.

Specific Policies

- That Rotherham Reserve continue to be the venue of the Amuri A&P show.
- That grazing leases be entered into in accordance with the leasing policy.
- That a lease agreement be established for the Amuri A&P society.
- That the maintenance/upgrading of the A&P show ring be negotiated as part of the lease agreement process.

Future development potential

Rotherham Reserve is a well developed reserve with irrigation and amenity trees. Any proposed development must be in keeping with the rural character of the reserve.



Rotherham Reserve location map



Rotherham Reserve

Waiau Esplanade Reserve

Description

Location	Waiau
Classification	Local Purpose Reserve - Esplanade
Area (hectares)	0.0301
Legal Description	Reserve 4975, Waiau Township
Adjacent Land	Farm land and the Waiau Hotel
Facilities	None
Acquisition	1958. Classified by Council 24/11/05
Acquisition	Gazette 1997 pg.3668

Introduction

The Waiau Esplanade Reserve is situated alongside the Waiau River adjacent to the Waiau Hotel. The reserve consists mainly of scrub land with some macrocarpa and willow trees.

The land adjacent to the reserve which forms part of the Waiau River has been developed into an attractive picnic area for locals and includes amenity planting, picnic tables, rubbish bins and vehicle access to the river.

Specific Policies

- That the adjoining land owners be encouraged to manage the reserve in conjunction with their land holdings.

Future development potential

The Waiau Esplanade Reserve could be enhanced with the removal of existing scrub and the planting of trees.



Waiau Esplanade Reserve location map



Waiau Esplanade Reserve



Land adjacent to Waiau Esplanade Reserve

Waiau Historical Reserve

Description

Location	Waiau
Classification	Local Purpose Reserve - Community Use
Area (hectares)	0.1012
Legal Description	Section 79, Block VII, Waiau Township
District Plan	H11
Notations	
Adjacent Land	Waiau Village Green
Facilities	Cob Cottage museum and historic relocated church and the historic Waiau Jail.
Acquisition	Vested & Classified NZ Gazette 7/06/07 p.1642

Introduction

Waiau Historical Reserve is situated adjacent to the Waiau Village Green on Cheviot Street, Waiau. The reserve features an original cob cottage built during the late 1860s and a timber Presbyterian Church built in 1888, both of which are listed as Category II buildings by the Historic Places Trust. The reserve was gifted by the Amuri Historical Society to Council for vesting as a reserve in 2007.

The cottage is now a museum featuring domestic memorabilia and other items of historic interest. The Amuri Historical Society maintain the collection and provide members of the public access to the facilities every Sunday afternoon. Beyond the cottage is the Waiau Presbyterian Church built on Leslie Street in 1888 and relocated to its present site in 1998 along with a pair of wrought iron gates which were part of the former church site.

Specific Policies

- That maintenance schedules be drafted for both the cob cottage and church, and that the reserve be maintained accordingly.
- That the cob cottage be opened to the public on occasion.

Future development potential

Waiau Historical Reserve shall continue to be developed and maintained to ensure that the cob cottage and historic church are preserved for future generations.



Waiau Historical Reserve location map



Cob Cottage - Waiau Historical Reserve



Old Church - Waiau Historical Reserve

Waiau Memorial Hall and Library

Description

Location	Waiau
Classification	Historic Reserve
Area (hectares)	0.1528
Legal Description	Lot 1 DP 369159, Lot 1 DP 22335, Part Sections 89-90, Block IV, Waiau Township Library and Hall
Adjacent Land	Waiau Historical Reserve, Waiau Village Green, businesses
Facilities	Hall, library, supper room, kitchen facilities, projection booth, stage, shooting range.
Acquisition	Classified NZ Gazette 2/12/2010, No. 164, p.4105

Introduction

The Waiau Hall and Library is situated in the Waiau between Highfield and Cheviot Streets, opposite the Waiau Historical Reserve and the Waiau Village Green. The building is classified as a Category II listed building under the Historic Places Act 1993 exhibiting two architecturally distinct parts. The original building of an Arts and Crafts style was constructed in 1911-1912 with government subsidies made available for the construction of public facilities to commemorate the coronation of George V. It included a library, adjoining hall and supper room.

Additions and alterations were made to the building in 1937-1938 to better accommodate the needs of the growing community. A neo-Georgian style hall was added at right angles to the existing north elevation of the old hall. The new hall contained a stage, dressing rooms, a 'Bio Room' (or projection booth) for the showing of films, and a shooting range. At this time the old hall was altered to serve as an enlarged supper room, whilst the library ceded a portion of its space to accommodate new toilet facilities.

The Waiau Memorial Hall and Library continues today to serve the community much as it has since 1912. The library is administered by its own committee and remains well utilised, being open on Tuesday afternoons and Saturday mornings. The hall is administered by the Waiau Citizens Association, and fulfils a variety of uses for the community including being a popular venue for functions (such as 21st birthdays), ANZAC services, school productions and badminton. A 'Kids Club', an after-school programme for children, is run on a Friday afternoon. The Waiau Community Project also runs computer classes from the building, for the benefit of disadvantaged



Waiau Memorial Hall and Library location map

children. The shooting range remains in-situ, but is presently unused- the club having been in recess since 1987.

Specific Policies

- That the Waiau Hall and Library continue to be maintained to a high standard and upgraded as funds allow.
- That the kitchen be upgraded as funds allow.
- That the hall be promoted as a venue for special events.

Future development potential

The Waiau Hall and Library is a social centre for the Waiau community. In time, the facility may require upgrading.

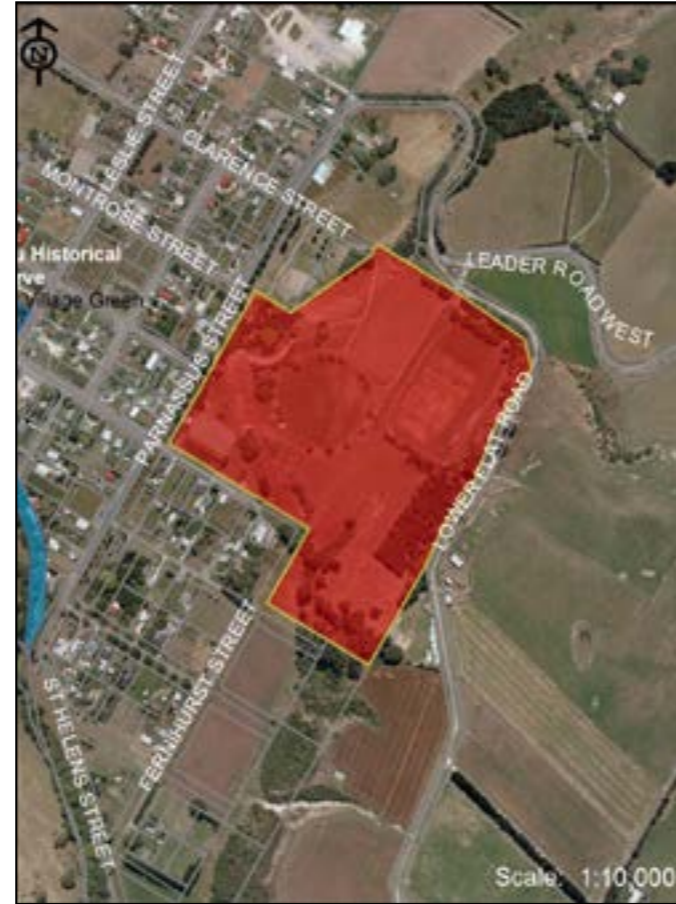


Waiau Hall & Library Reserve

Waiau Reserve

Description

Location	Waiau
Classification	Recreation Reserve
Area (hectares)	15.7550
Legal Description	Part Rural Section 41886, Block XIII, Waiau Survey District, Survey Office 16217
District Plan	T122
Notations	
Adjacent Land	Waiau Village
Facilities:	
Waiau Tennis Club:	Tennis courts, club rooms, outdoor lighting
Football Club:	Football fields, clubrooms, kitchen facilities, football poles, outdoor lighting
Cricket Club:	Cricket pitch, clubhouse, shed and practice net
War Memorial:	Large cenotaph type structure
Other:	Walking tracks
Acquisition	Gazette ref 1979/2694



Waiau Reserve location map

Introduction

Waiau Reserve is situated on Lower Flat Road, Waiau. The reserve is home to the Waiau Tennis, Netball, Football, and Cricket Clubs, with the lower field being used by the Waiau Pony Club. The rugby grounds are also used by community groups for the hosting of the annual fireworks display and the annual Waiau Pig Hunt. The reserve also contains the Waiau War Memorial.

Specific Policies

- That the reserve be maintained to a high standard.
- That these clubs be subject to lease agreements.
- That additional signage be erected on Parnassus Street identifying the various clubs on the reserve.

Future development potential

Waiau Reserve is a well utilised facility which serves a number of community clubs. Any proposed developments must be in keeping with the rural nature of the reserve and not inhibit the functions of the various clubs.



Waiau Reserve



Waiau Reserve

Waiau Village Green

Description

Location	Waiau
Classification	Local Purpose Reserve - Community Use
Area (hectares)	0.4884
Legal Description	Lots 1 & 2 DP 25942, Lots 2 - 4 DP 62756, Block VII, Waiau Township
District Plan Notations	H11
Adjacent Land	Waiau Village
Facilities	Public toilet block with feature gardens, a children's playground, a covered barbeque area with picnic tables, an interpretation panel on the Waiau jailhouse.
Acquisition	Hurunui District Council Gazette 26/08/04



Waiau Village Green location map

Introduction

The Waiau Village Green is situated in the centre of Waiau. The Village Green, developed and constructed as a community project, features a public toilet block with feature gardens, a children's playground, a covered barbeque area with picnic tables, an interpretation panel, and is home to the restored jailhouse.

Specific policies

- That the Waiau Village Green continue to be developed with landscaping as appropriate.

Future development potential

Seadown Crescent Reserve is an open green space area that could easily be developed into a picnic area to be enjoyed by residents within the locality. The establishment of shade trees and reserve seating is an appropriate development option for the reserve.



Waiau Village Green



Waiau Village Green

Wandle Esplanade Reserve

Description

Location	Waiau
Classification	Local Purpose Reserve - Esplanade
Area (hectares)	1.0759
Legal Description	Lot 3 DP 73265, Block 11, Waiau Survey District
Adjacent Land	Farm land
Facilities	None
Acquisition	Hurunui District Council 1997. Classified by Council 24/11/05

Introduction

The Wandle Esplanade Reserve bounds the Wandle River and may be accessed from the Inland Road, Waiau. The reserve is leased on a five yearly basis to the adjoining owner for grazing purposes.

Specific Policies

- That the adjoining land owner be encouraged to manage the reserve in conjunction with their land holdings.
- That the Wandle Esplande Reserve be enhanced with the planting of amenity or native vegetation.



Wandle Esplanade Reserve location map

Future development potential

The Wandle Esplanade Reserve could be enhanced with the planting of amenity trees or native vegetation.



Wandle Esplanade Reserve